

## Smart & Mobile Solution

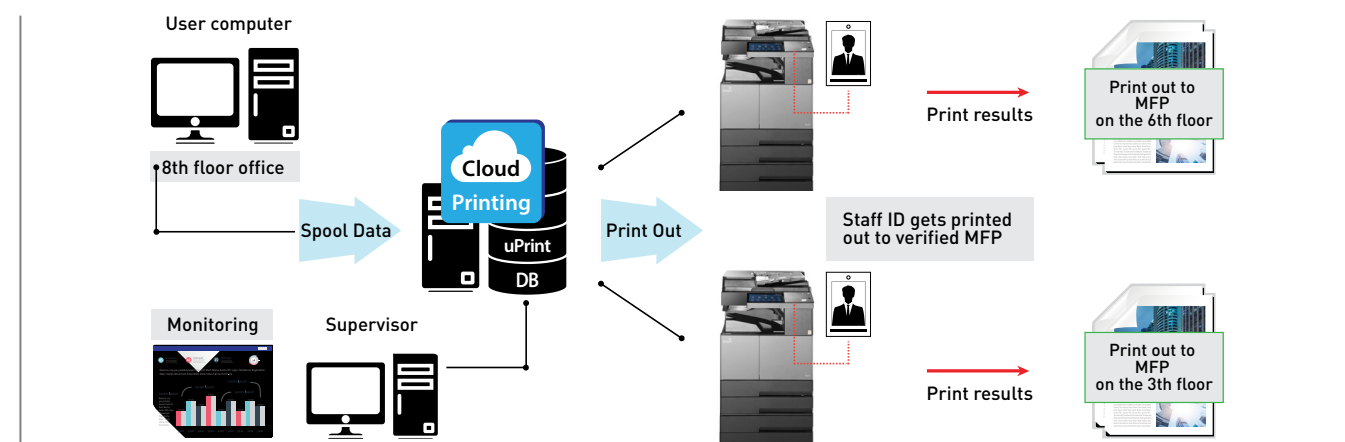
Customized solutions

### Customized solutions

N610 Series support cloud printing, document security, and various solutions for device management to establish user-centered optimized work environment. Sindoh's excellent consulting for solutions and customized service can complete your smart business.

※ The function is in development stage, and will be implemented when ready

### Cloud Printing Solution



### Convenient Mobile Functions

N610 Series support mobile printing for all types of smartphones and tablets. Users can use Air-Print for Apple devices and Sindoh's printing application (sPrint) for Android devices to print photos or documents.



### Android sPrint Application

Via NFC, Android devices can be connected to the device to print a document. Scanned image from N610 series can be received directly by using the sPrint application.



### Apple Air-Print

No additional application is required to print photos or document from iPhone or iPad. Also, no driver installation is required to print with MacBook laptops and simple settings including number of copies, paper size, or 2-side printing can be selected.



## Sindoh A3 black & white MFP **N610** series

### COPY

Type	N611	N612	N613
Speed	30 ppm	40 ppm	45 ppm
Preheating Time	Less than 56 seconds		
Time to first page	Less than 8 seconds	Less than 6.5 seconds	
Resolution	600 dpi		
SSD (option)	256 GB		
Processor	Quad Core (800 MHz Dual Core + 533 MHz Dual Core)		
Memory	2 GB		
Duplex Print	Standard		

Papers	Paper feed	Standard paper tray	1,000 sheets (500 sheets x 2 decks)		
		Multi-purpose paper tray	100 sheets		
		RADF paper tray	90 sheets (75 g/m <sup>2</sup> )		
		Maximum	2,100 sheets (500 sheets x 4 decks + 100 sheets manual paper tray)		
	Size	Standard paper tray 1	A5 ~ B4, 5.5" x 8.5" ~ 8.5" x 14"		
		Standard paper tray 2	A5 ~ A3, 5.5" x 8.5" ~ 11" x 17"		
		Multi-purpose paper tray	A6 ~ A3, 5.5" x 8.5" ~ 11" x 17"		
		RADF paper tray	Width 139.7 ~ 297 x length 139.7 ~ 432 mm		
		Optional paper tray	A5 ~ A3, 5.5" x 8.5" ~ 11" x 17"		
		Duplex print	length 148 ~ 431.8 mm		
	Weight	Standard paper tray	60 ~ 220 g/m <sup>2</sup>		
		Multi-purpose paper tray	60 ~ 220 g/m <sup>2</sup> , OHP, Envelope		
		RADF paper tray	50 ~ 128 g/m <sup>2</sup>		
		Optional paper tray	60 ~ 220 g/m <sup>2</sup>		
Duplex print		60 ~ 209 g/m <sup>2</sup>			
Consumables	Output Tray	250 sheets			
	Toner	Starter	20,000 sheets		
		After Market	20,000 sheets / 30,000 sheets		
Others	Power	Max power consumption	1.1 kW or less		
		Sleep mode	4.2 W or less		
	Noise	In printing	69 db	73 db	74 db
		In stand-by	48 dB or less		
	Display	9" Color LCD			
	Size (W x D x H)	559 x 599 x 802.9 mm			
	Weight	55 Kg			
	Monthly print	Optimal	5,800 sheets	9,000 sheets	10,000 sheets
		Maximum	28,000 sheets	48,000 sheets	50,000 sheets
	Optional	Fax kit, Double paper tray, Mobile print, SSD, Wi-Fi			

### SCAN

Type		N611	N612	N613
Scan mode		Color, Gray Scale, B & W		
Speed (Scan at 300 dpi, Color / B & W)		45 ipm / 55 ipm		
Resolution		150 / 200 / 300 / 600 dpi		
Scan size	Flat bed	Width 297 x length 431.8 mm (A3 or 11" x 17")		
	RADF	Max width 297 x length 1,000 mm (300 dpi or less)		
		Max width 297 x length 432 mm (600 dpi)		
Interface		Ethernet 10Base-T / 100Base-TX / 1000Base-T, USB Device 1.1 / 2.0, USB Host 1.1 / 2.0		
Protocol		TCP / IP (FTP, SMB, SMTP, WebDAV) (IPv4 / IPv6)		
OS compatible		Windows 7 / 8 / 8.1 / 10 (32bit / 64bit), XP (SP3) / Vista (SP2), Windows Server 2003 / 2008 R2 SP1, 2012, Macintosh OS X 10.5, 10.6, 10.7, 10.8, 10.9, 10.10, 10.11		
Driver		TWAIN / WIA Driver		
Support format		TIFF, PDF, JPEG		

### PRINT

Type		N611	N612	N613
Print speed		30 ppm	40 ppm	45 ppm
First page print speed		8 seconds or less	6 seconds or less	
Resolution		Real 1,200 dpi		
Emulation		PCL6/5e, PS3		
OS compatible	Server	Windows Server 2003 / Server 2003 R2 / Server 2008 (32bit, 64bit) Windows Server 2008 R2 / Server 2012 / Server 2012 R2 (64bit)		
	Client	Vista (SP2) / 7 / 8 / 8.1 (32bit, 64bit) Windows Server 2003 / Server 2003 R2 / Server 2008 (32bit, 64bit) Macintosh OSX 10.5, 10.6, 10.7, 10.8, 10.9, 10.10, 10.11 Linux OS		
PCL6/5e		Windows 7 / 8 / 8.1 / 10 (32bit, 64bit), Windows XP (32bit SP3) / Vista (SP2) Windows Server 2008 R2 SP1 / Server 2012 Printer (64bit)		
PS3		Windows 7 / 8 / 8.1 / 10 (32bit, 64bit), Windows XP (32bit SP3) / Vista (SP2) Windows Server 2008 R2 SP1 / Server 2012 Printer (64bit) Macintosh OSX 10.5, 10.6, 10.7, 10.8, 10.9, 10.10, 10.11 Linux OS		
Memory		2 GB		
Interface		Ethernet 10Base-T / 100Base-TX / 1000Base-T, USB Device 1.1 / 2.0, USB Host 1.1 / 2.0		

### FAX

Type	N611	N612	N613
Com lines	PSTN (Public Switch Telephone Network), PBX (Private Branch Exchange), G3 (Fax line)		
Tx speed	2.4 ~ 33.6 kbps		
Tx time	Less than 2 seconds (A4, V.34, 33.6 kbps, JBIG)		
Data compression type	MH, MR, MMR, JBIG		
Com mode	ECM / G3		
Tx size	Flat bed	Width 297 x length 431.8 mm (A3 or 11" x 17")	
	RADF	Max width 297 x length 1,000 mm	

※ Some images in this catalog show the product with the optional features installed.

**Sindoh**  
Unmistakable

User-friendly, innovative, and smart MFP

Sindoh A3 black & white MFP

## **N610** series





SMART MFP for most work efficiency,

# N610 series

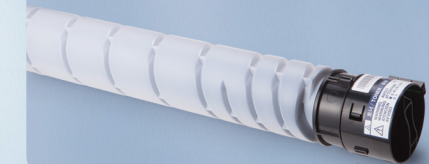
## Output tray settings by functions

Output tray is designed large enough to accommodate many copies with easy lift. Also, two trays, basic and multi-purpose, are installed as standard to sort documents easily for copying, printing, and faxing to meet user needs.



## Environment-friendly & compact design

The developer and drum with SRR (Self Refresh & Recycle) Technology are designed to maximize the printing quality and to extend the device life. The device is designed compact and more convenient with no wasting toner bottle.



## OP panel for easy and convenient use

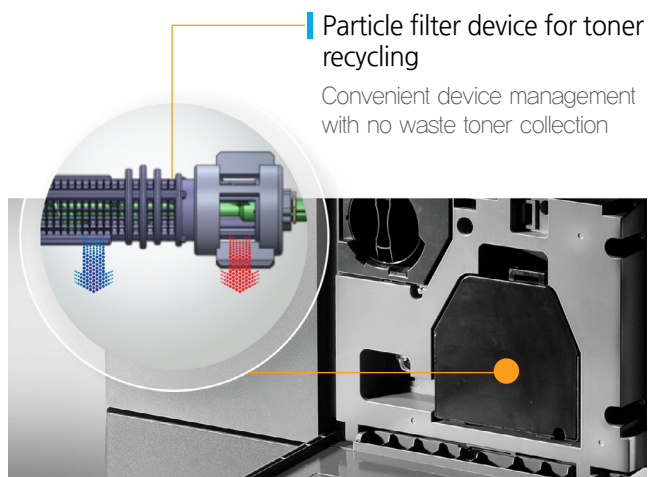
User-friendly UI is applied in 9-inch color touch LCD screen to make the device easy to use. Speed function keys can be configured to set frequently used features and user logo and icon design can be configured to make this smart MFP more customized and convenient.

## Eco-Friendly & Compact Design

Durable and environment-friendly solution

## Improvement on printing quality and device durability with environment-friendly design

Strengths of the AR Technology and Refresh Technology are combined together; printing quality and developer durability are improved with auto purification of carriers and no waste collection bottle is needed as new featured paper dust filter is used to recycle developer with small paper dust particles and to collect developer with large paper dust particles into drum. In addition, it provides a benefit of easy maintenance, high quality printing and compact design.



AR type

Self-purification of developer carrier with providing mixed toners  
High-resolution printing quality

+

Recycle type

Recycle of toners with paper dust filter  
Convenient device management with no waste toner collection

Advantages of AR type and Recycle type combined



SRR type

Supply toner mixed with carriers to improve printing quality  
Toner recycle and compact design with no waster toner collection bin

## Compact size with global design

N610 series is developed in collaboration with Tangerine, specialized design company in UK. Sindoh's unique DNA in design, trendy colors, emphasis on details, new materials, and impeccable finish, is reiterated in this device. Compact design of the device (34% smaller than N600 device) gives your office more space for other use.

Type	N600	N610	Difference
Width	623mm	559mm	-64mm
Depth	799mm	599mm	-200mm
Height	816mm	802.9mm	-13.1mm

-34%

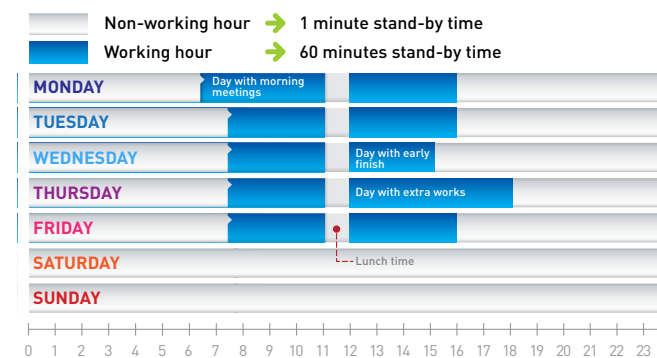


## Power-saving mode with auto work pattern detection

A new feature, "Weekly Timer", adjusts stand-by time automatically depending on the work patterns of user which vary in days of week, morning, evening, lunch time, and peak time. Stand-by mode is more easy to use and it saves energy while increasing the device life.

Weekly Timer :

The device detects user work hours depending on days of week to adjust the stand-by time. Also, user can manually set the stand-by time.



## Auto dust removal

When dust or smudge on flatbed is detected, the source of dirt is removed automatically by image processing for copying or scanning. Also, "Dust detection" warning image is displayed to alert user so that user can remove the dirt.



## Fax forward

Received fax documents can be forwarded to specified devices at certain time of day. This function can be useful for departments for overseas business, multi-international company, and sales staffs who frequently work outside of office.

※ With optional part

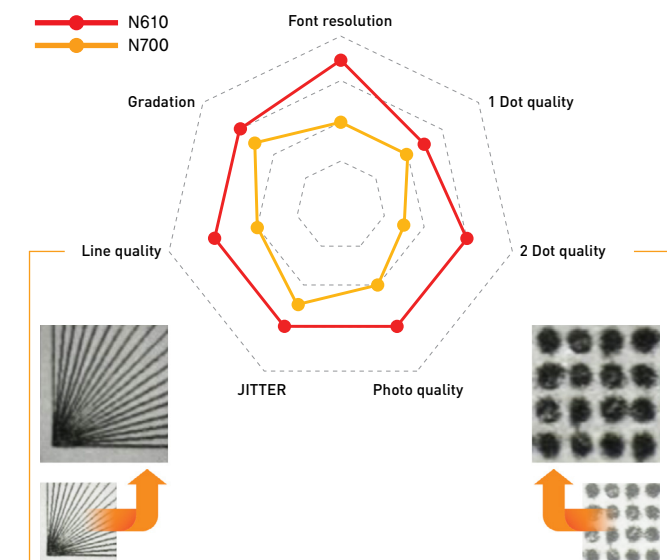


## High Quality & Convenient System

Optimized user environment

## Super-fine particle toners for high quality printing

Optimized high-quality printing is possible with finer and more consistent particles of toner. A vivid, but very small dot or fine line can be printed clearly.



## Enhanced fonts to improve text printing quality

More embedded fonts are added to support various types of fonts from a wide range of application programs. Printing speed and quality are improved with these fonts.

Bitmap fonts



Vector fonts



※ PCL 45 Fonts (Vector) & PS 136 Fonts embedded:  
Improved PCL Vector fonts are added to improve printing quality and performance.

※ Improved PCL XL emulation : PCL emulation HES 4.2 version, Next-generation PCL XL is equipped for faster printing